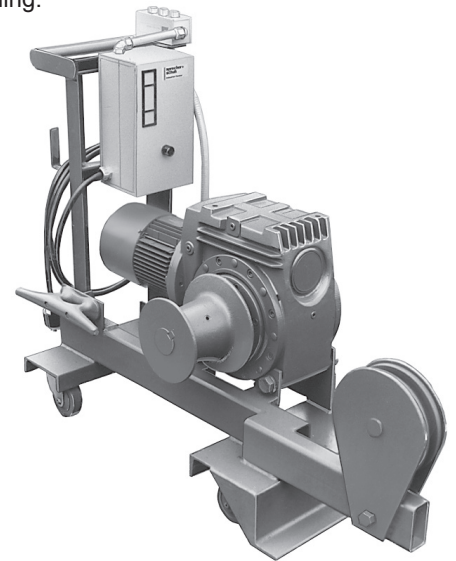


Capstan Hoist

- Mobile capstan hoists are used to pull out-of-balance counterweight arbors down for loading.
- Fully self contained, the hoist has an integral motor, brake, capstan drum, starter and controls.
- Foot switch allows use of both hands to manage the hauling line.
- The base has fixed and swivel casters for easy positioning, and a front lip to engage a reaction bar in the locking rail or floor. Reaction rail provided separately.
- Hoists include 150' (45.75 m) of 3/4" (19 mm) SureGrip® rope with a forged safety hook.
- Supplied with 40' (12 m) of power cord with NEMA connector, mating receptacle and junction box.

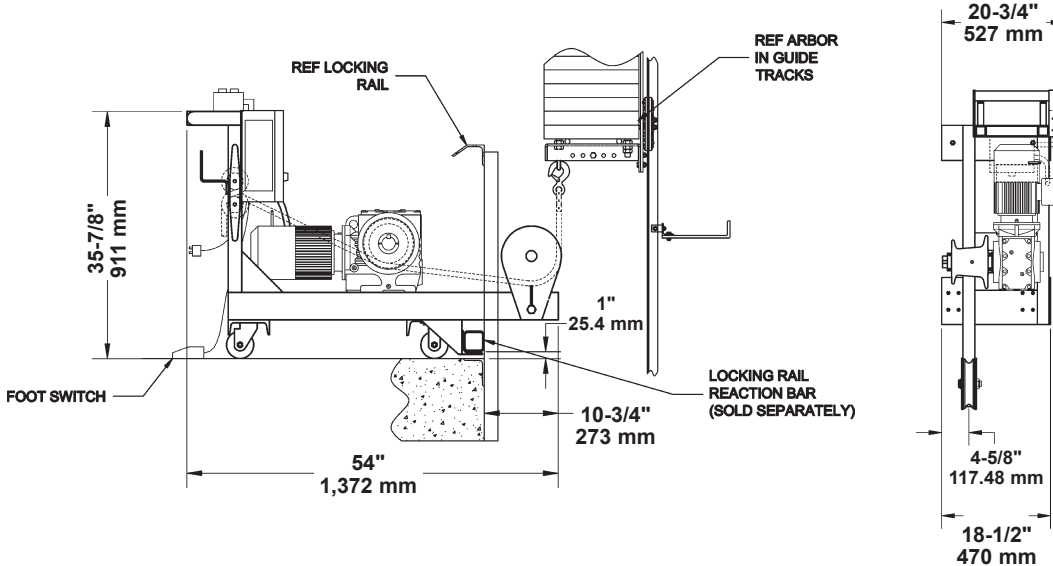
Power Requirements

Model	Voltage	Full Load Amps
3 Phase 60 Hz	208	6.3
3 Phase 60 Hz	230	5.7
3 Phase 60 Hz	460	2.85
3 Phase 50 Hz	380	3.3



Mobile Capstan Hoist
018-416

Dimensions



Order Information

Number	Description	Weight
018-416	Mobile Capstan Hoist 1500 lbs. (680 kg), 35 fpm (0.178 m/s)	400 lbs. (181 kg)



Design, Manufacture and Installation of Theatrical Equipment Worldwide

For unusual applications, J.R. Clancy can create custom equipment to match your facility's specific needs. Please contact us to discuss your project's requirements.



© 2016 Wenger Corporation
USA/07-16/W

