

PowerAssist[®] Counterweight Automation System

A compact fixed speed hoist that automates a new or existing counterweight rigging set. The hoist and counterweight work together, allowing the set to carry any load from none to the rated capacity without the need to adjust counterweights.

Applications

Most theatres in North America use manually operated counterweighted rigging sets. These use an arbor to hold weights that balance the load (lighting equipment, curtains, scenery, etc.) on the batten. In order to operate safely, the load and the counterweight must be equal.

In order to keep the set in balance, the counterweight must be adjusted every time the load changes. This may be frequent, and generally requires adjusting the counterweight from an elevated loading gallery.

Failure to keep the sets in balance may result in “runaways” or accidents.

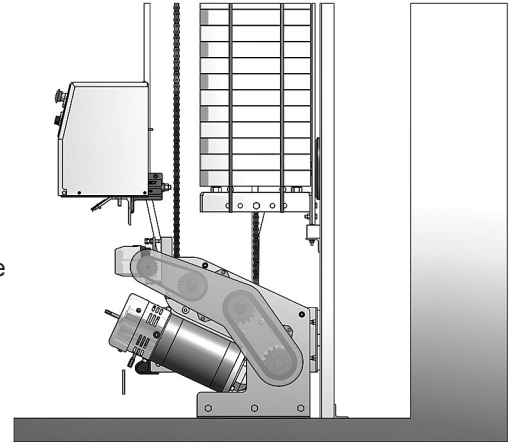
The PowerAssist hoist, working with the counterweight arbor, carries the out-of-balance load. This is particularly helpful on high capacity sets with changing loads, such as lighting sets, removable orchestra shell ceilings, and scenery battens.

Use of the PowerAssist eliminates the need for staff and students to balance sets, climb to the loading gallery, and reduces risk backstage.

Units are available for use with both single and double purchase sets.

When used with double purchase sets the arbor and head block must be replaced to accommodate the drive chain.

PowerAssist hoists may be located on the stage floor or in an arbor pit.



Features

Quality Management – Clancy’s ISO 9001 certified quality management system ensures consistency and excellence in engineering, manufacturing, project management, sales, and customer service.

Technical Support is available 24/7/365 from the factory. Additional support is provided by a worldwide group of established J.R. Clancy dealers.

Safety

No Handling of Counterweights or climbing to elevated loading galleries to keep sets in balance.

The PowerAssist hoist handles the out-of-balance load for you.

Two Levels of Limit Switches are set for your specific site conditions.

The normal travel and over travel switches use separate, redundant circuits for added security.

E-Stop System meets NFPA 79 “Electrical Standard for Industrial Machinery”.

Deadman Controls (“hold to run”) in conformance with NFPA 79 “Electrical Standard for Industrial Machinery,” ensure the operator is present when movement is taking place.

Maintenance Light – Regular service is necessary for safety and equipment life for all moving machinery. J.R. Clancy control systems have a maintenance light, indicating when regular system service is required.

208, 230, or 460 volts units are available without the need for expensive, bulky transformers. 380V 50Hz units are also available.

Motors Rated to Lift the Load have a 1.0 service factor, so they can lift the load every time – not just some of the time.

Touch Safe means the interior of all electrical enclosures are guarded to prevent touching live components, per IEC standard.

Control Options

Push Button Controls

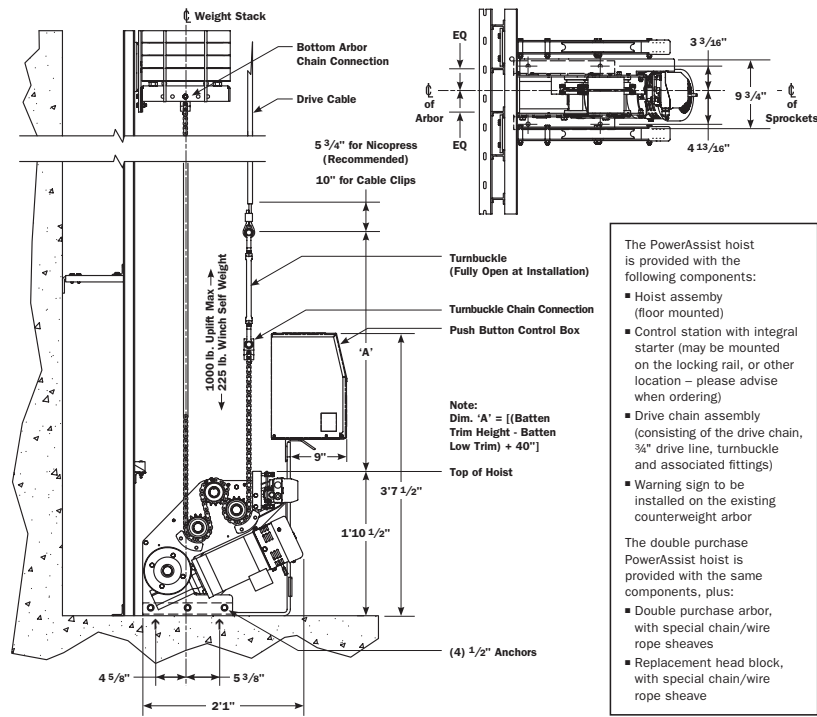
Hold to run Up and Down pushbuttons are provided so that sets can be run by “eye”. A key operated On / Off switch and an Emergency Stop button are provided for security.

SceneControl™

J.R. Clancy offers a range of control systems to meet your production requirements and budgets. Consoles allow control of multiple hoists, including the ability to create cues that control several sets simultaneously. Contact us for more information.

Continued on the following page.

Dimensions



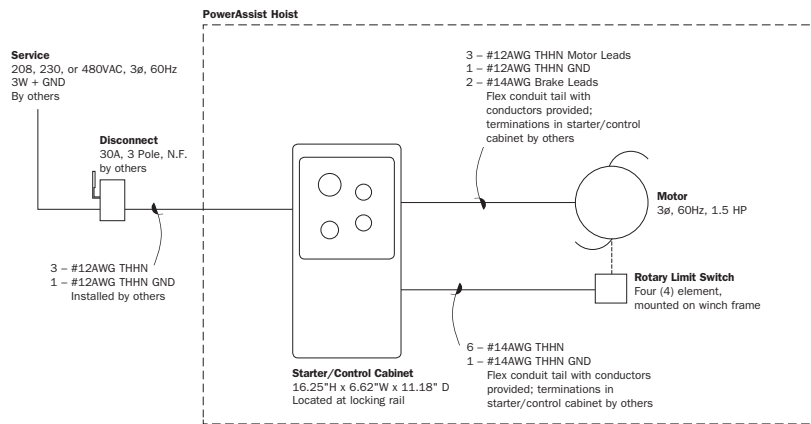
The PowerAssist hoist is provided with the following components:

- Hoist assembly (floor mounted)
- Control station with integral starter (may be mounted on the locking rail, or other location - please advise when ordering)
- Drive chain assembly (consisting of the drive chain, 3/4" drive line, turnbuckle and associated fittings)
- Warning sign to be installed on the existing counterweight arbor

The double purchase PowerAssist hoist is provided with the same components, plus:

- Double purchase arbor, with special chain/wire rope sheaves
- Replacement head block, with special chain/wire rope sheave

PowerAssist with Push Button Control One Line Riser — Typical



Order Information

Model	Control	Type	Speed	Capacity	HP	Weight
018-PA	Push Button Station	Single Purchase	25 fpm	2,000 lbs.	1.5	350 lbs.
018-PADP	Push Button Station	Double Purchase	(0.13 m/s)	(907 kg)	(1.12 kW)	(159 kg)

PowerAssist Electrical Requirements

Model	Speed	Capacity	HP	Current Draw		
				280 - 240 V	440 - 480 V	380 V 21 fpm (0.107 m/s)
018-PA	25 fpm	2,000 lbs.	1.5	5.8 A	2.7 A	3.3 A
018-PADP	(0.13 m/s)	(907 kg)	(1.12 kW)			



Design, Manufacture and Installation of Theatrical Equipment Worldwide
 For unusual applications, J.R. Clancy can create custom equipment to match your facility's specific needs. Please contact us to discuss your project's requirements.



© 2016 Wenger Corporation
 USA/11-16/W



WENGER CORPORATION

Phone 800.4WENGER (493-6437) Worldwide 1.507.455.4100 | Fax 507.455.4258 Worldwide 1.507.774.8576
 Parts & Service 800.887.7145 | Canada Office 800.268.0148 | Web wengercorp.com | 555 Park Drive, PO Box 448 | Owatonna | MN 55060-0448

GEARBOSS

Phone 800.493.6437 | email gearboss@wengercorp.com | Web gearboss.com | 555 Park Drive, PO Box 448 | Owatonna | MN 55060-0448

JR CLANCY

Phone 800-836-1885 Worldwide 1.315.451.3440 | Fax 877.836.1885 Worldwide 1.315.451.1766 | Web jrclancy.com
 7041 Interstate Island Road | Syracuse | NY 13209-9713