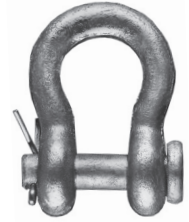


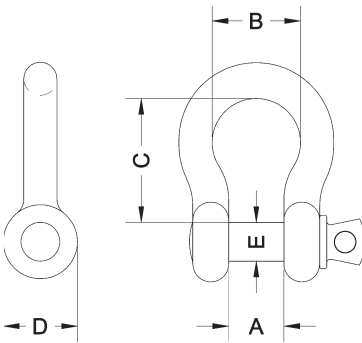
Shackles

- Drop forged anchor shackles meet the performance requirement of Federal Specification RR-C-271D type IVA.
- Shackles have a hot galvanized finish.



Round Pin,
Anchor Shackle

Dimensions



Number	Dim. A	Dim. B	Dim. C	Dim. D	Dim. E
019-A187	3/16" (4.76 mm)	9/16" (14.3 mm)	7/8" (22.2 mm)	5/8" (15.8 mm)	1/4" (6.35 mm)
019-A250	15/32" (11.9 mm)	3/4" (19 mm)	1-1/8" (28.5 mm)	3/4" (19 mm)	5/16" (7.9 mm)
019-A312	17/32" (13.5 mm)	15/16" (23.8 mm)	1-1/4" (31.75 mm)	7/8" (22.2 mm)	3/8" (9.5 mm)
019-A375	21/32" (16.67 mm)	1-1/8" (28.5 mm)	1-7/16" (36.5 mm)	1" (25.4 mm)	7/16" (11.1 mm)

Order Information

Number	Description	RWL	Weight
Round Pin Shackles			
019-A187R	3/16" (4.76 mm) Round Pin Forged Anchor Shackle	666 lbs. (302 kg)	0.07 lb. (0.03 kg)
019-A250R	1/4" (6.35 mm) Round Pin Forged Anchor Shackle	1000 lbs. (454 kg)	0.14 lb. (0.06 kg)
019-A312R	5/16" (7.9 mm) Round Pin Forged Anchor Shackle	1500 lbs. (680 kg)	0.22 lb. (0.09 kg)
019-A375R	3/8" (9.5 mm) Round Pin Forged Anchor Shackle	2000 lbs. (907 kg)	0.33 lb. (0.15 kg)
Screw Pin Shackles			
019-A187S	3/16" (4.76 mm) Screw Pin Forged Anchor Shackle	666 lbs. (302 kg)	0.07 lb. (0.03 kg)
019-A250S	1/4" (6.35 mm) Screw Pin Forged Anchor Shackle	1000 lbs. (454 kg)	0.14 lb. (0.06 kg)
019-A312S	5/16" (7.9 mm) Screw Pin Forged Anchor Shackle	1500 lbs. (680 kg)	0.22 lb. (0.09 kg)
019-A375S	3/8" (9.5 mm) Screw Pin Forged Anchor Shackle	2000 lbs. (907 kg)	0.33 lb. (0.15 kg)
RWL is based on the manufacturer's 6:1 safety factor.			



Design, Manufacture and Installation of Theatrical Equipment Worldwide
 For unusual applications, J.R. Clancy can create custom equipment to match your facility's specific needs. Please contact us to discuss your project's requirements.



© 2016 Wenger Corporation
USA/11-16/W

