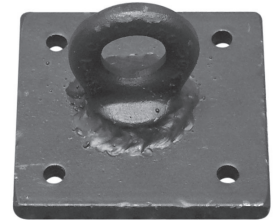


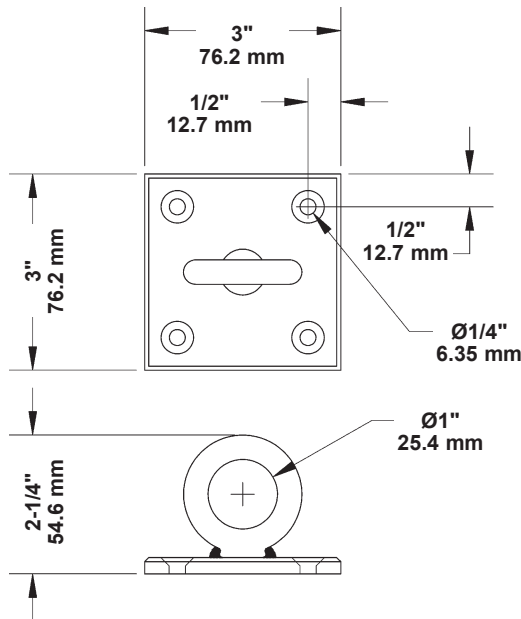
Floor Plate

- Used for terminating guide lines.
- 3" x 3" (76.2 mm x 76.2 mm) square, steel floor plate with forged eye.



Floor Plate
016-97

Dimensions



Order Information

Number	Description	RWL	Weight
016-97	Floor Plate	450 lbs. (204 kg)	0.8 lb. (0.36 kg)
RWL: RWL is maximum load that can be applied to the floor plate which is in "like new" condition and has been properly installed, maintained, and operated.			



Design, Manufacture and Installation of Theatrical Equipment Worldwide
 For unusual applications, J.R. Clancy can create custom equipment to match your facility's specific needs. Please contact us to discuss your project's requirements.



© 2016 Wenger Corporation
USA/07-16/W

